

SOCIAL DETERMINANTS OF HEALTH

Presenter: Erin Smith, MPH
Public Health Promoter, Health Equity
Timiskaming Health Unit
October 11, 2022

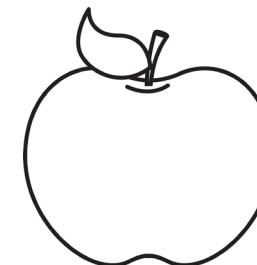
WHAT ARE THE SOCIAL DETERMINANTS OF HEALTH?

- Social and economic conditions in which people are born, grow, work, live, and age
- Non-medical factors that influence health outcomes

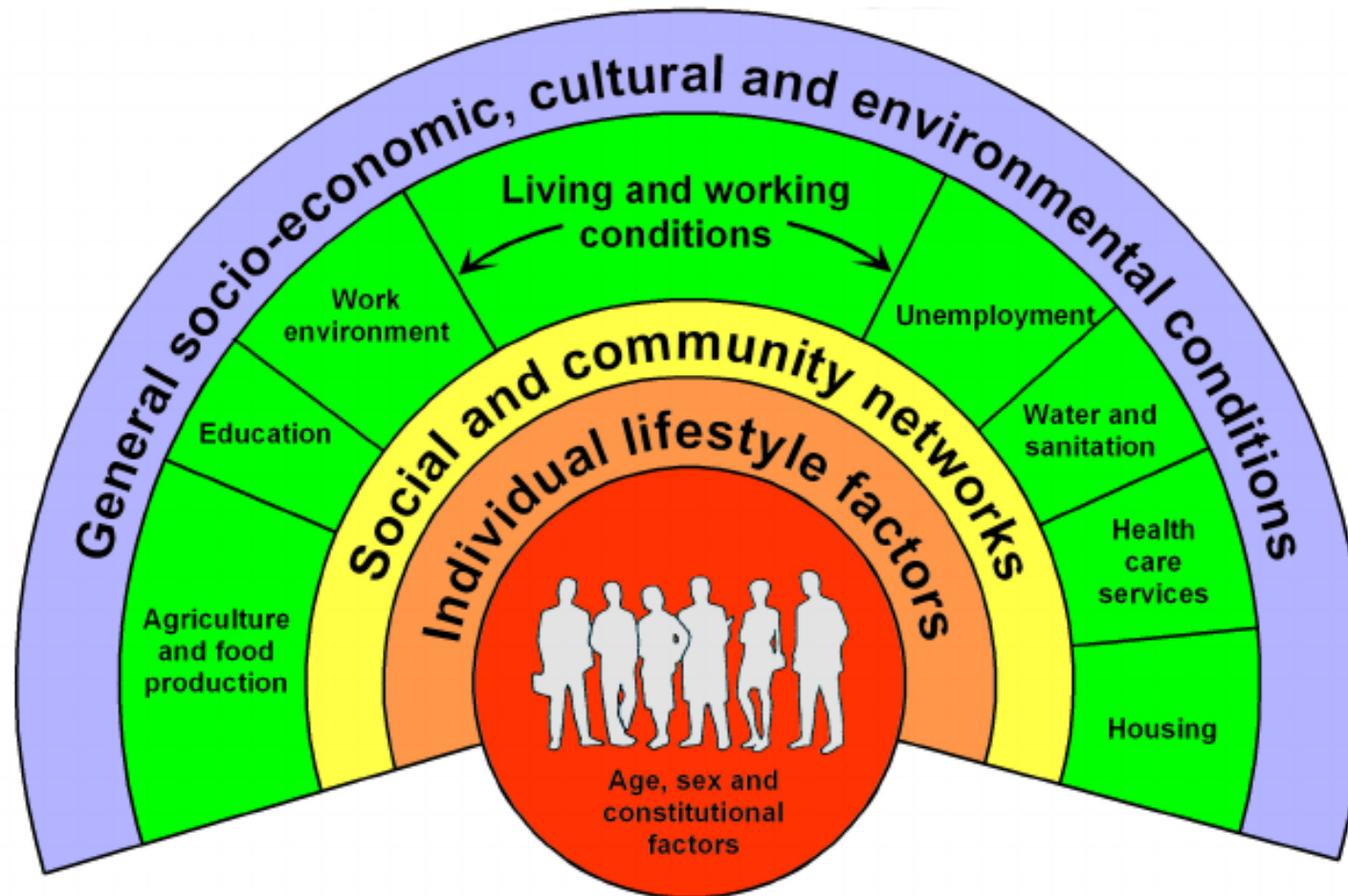


WHAT ARE THE SOCIAL DETERMINANTS OF HEALTH?

- Income
- Education
- Unemployment and job security
- Food insecurity
- Housing
- Early childhood development
- Social inclusion



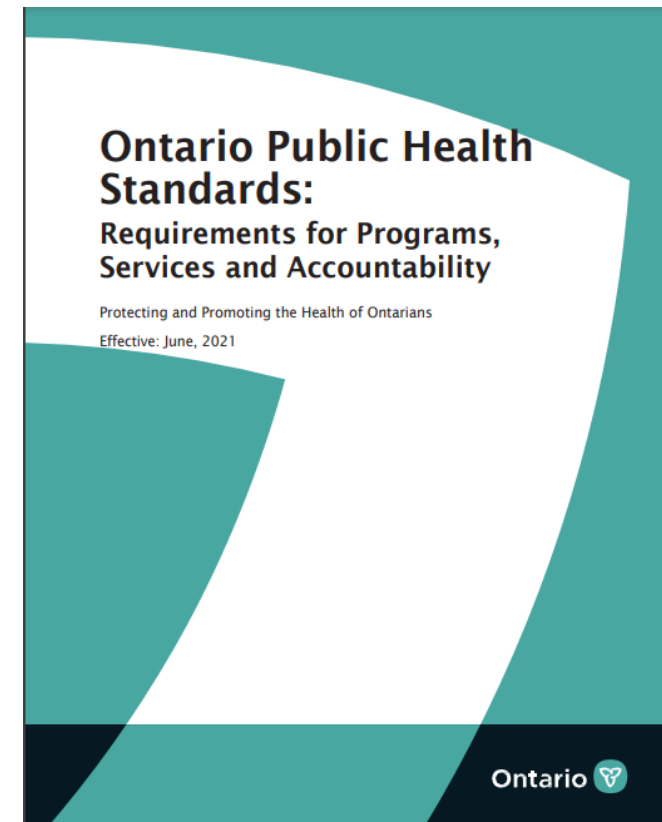
RAINBOW MODEL OF THE SDOH



Source: Dahlgren and Whitehead, 1991

ONTARIO PUBLIC HEALTH STANDARDS

- Published by the Ministry of Health
- Include protocols and guidelines that define requirements for THU's programs



FOUNDATIONAL STANDARDS

Population
Health
Assessment

**Health
Equity**

Effective
Public Health
Practice

Emergency
Management

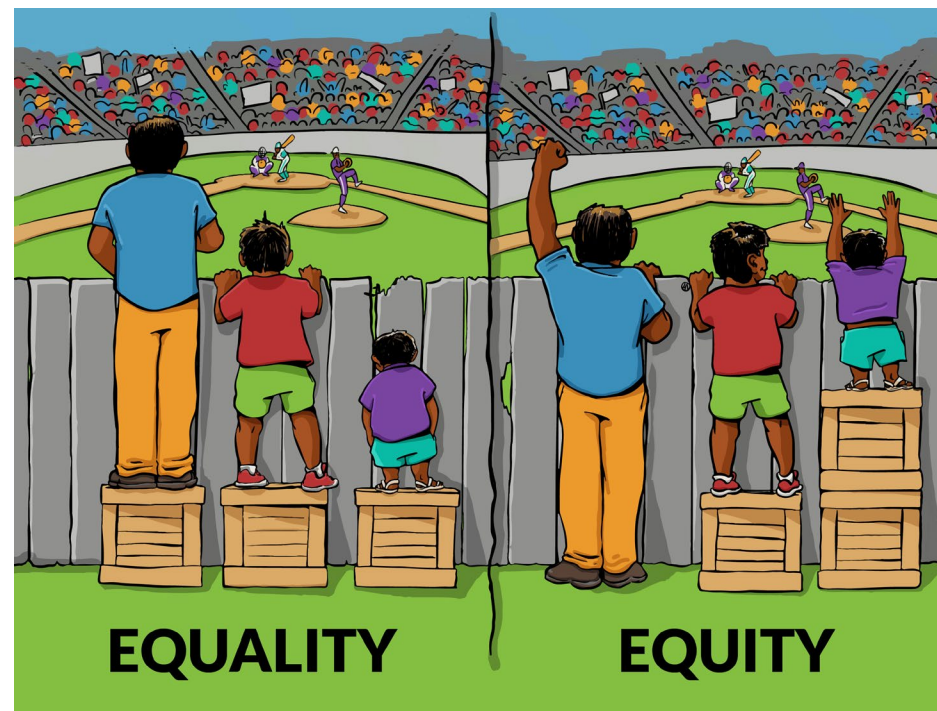
HEALTH EQUITY

- Fair opportunity to reach full health potential
- Involves reducing unnecessary and avoidable differences
- Many causes of health inequities are related to the SDOH



EQUALITY VS. EQUITY

- **Equality:** different needs, same support/resources
- **Equity:** different needs, different support/resources



SDOH AND THE BOARD OF HEALTH

- SDOH play a role in creating equitable and thriving communities
- SDOH lens in decision-making for maximum community impact



SDOH AND THE BOARD OF HEALTH

- Living Wage Employer Certification: June 2023
- Addressing Household Food Insecurity on Ontario: April 2023

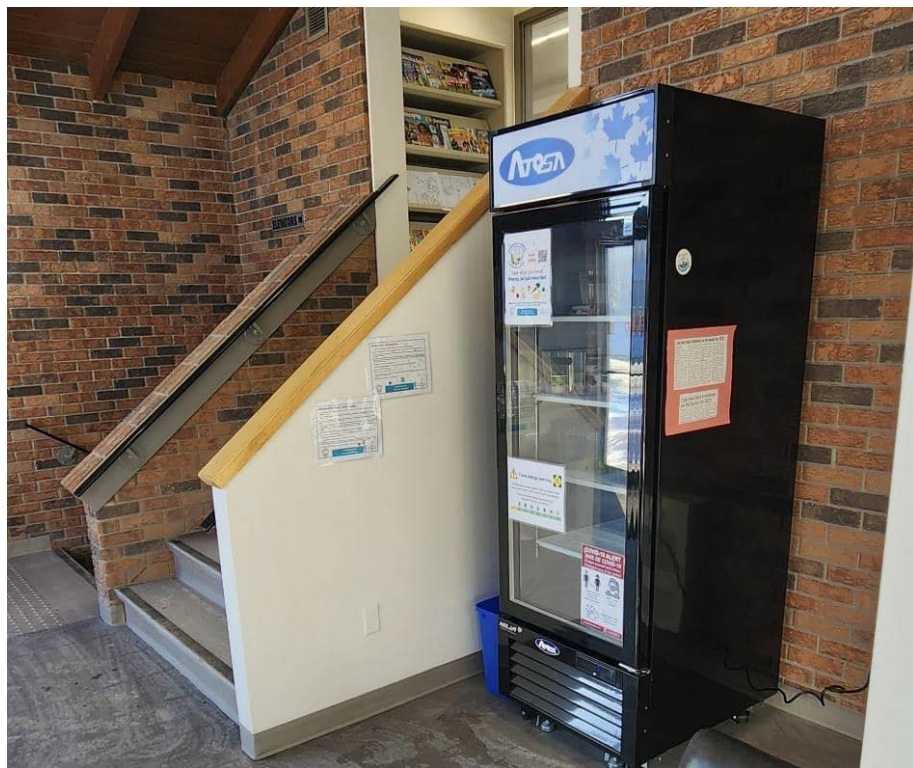


livingwage.ca



Ontario Dietitians in Public Health
Diététistes en santé publique de l'Ontario

SDOH WORK AT THU



Food Security



Early childhood development

CONCLUSION/QUESTIONS

